



OFFICE / MULTI-FAMILY / SENIOR LIVING

1301 Chestnut Street, Emporia, Kansas



SALE PRICE: \$1,900,000 | 39,000 SF BUILDING



- Former College of Emporia Student Union
- 39,000 SF building on 3.7 acres
- Built in 1965 - C-2 Zoning
- Well maintained roof, parking lot, and mechanical



CLICK HERE TO VIEW MORE
LISTING INFORMATION

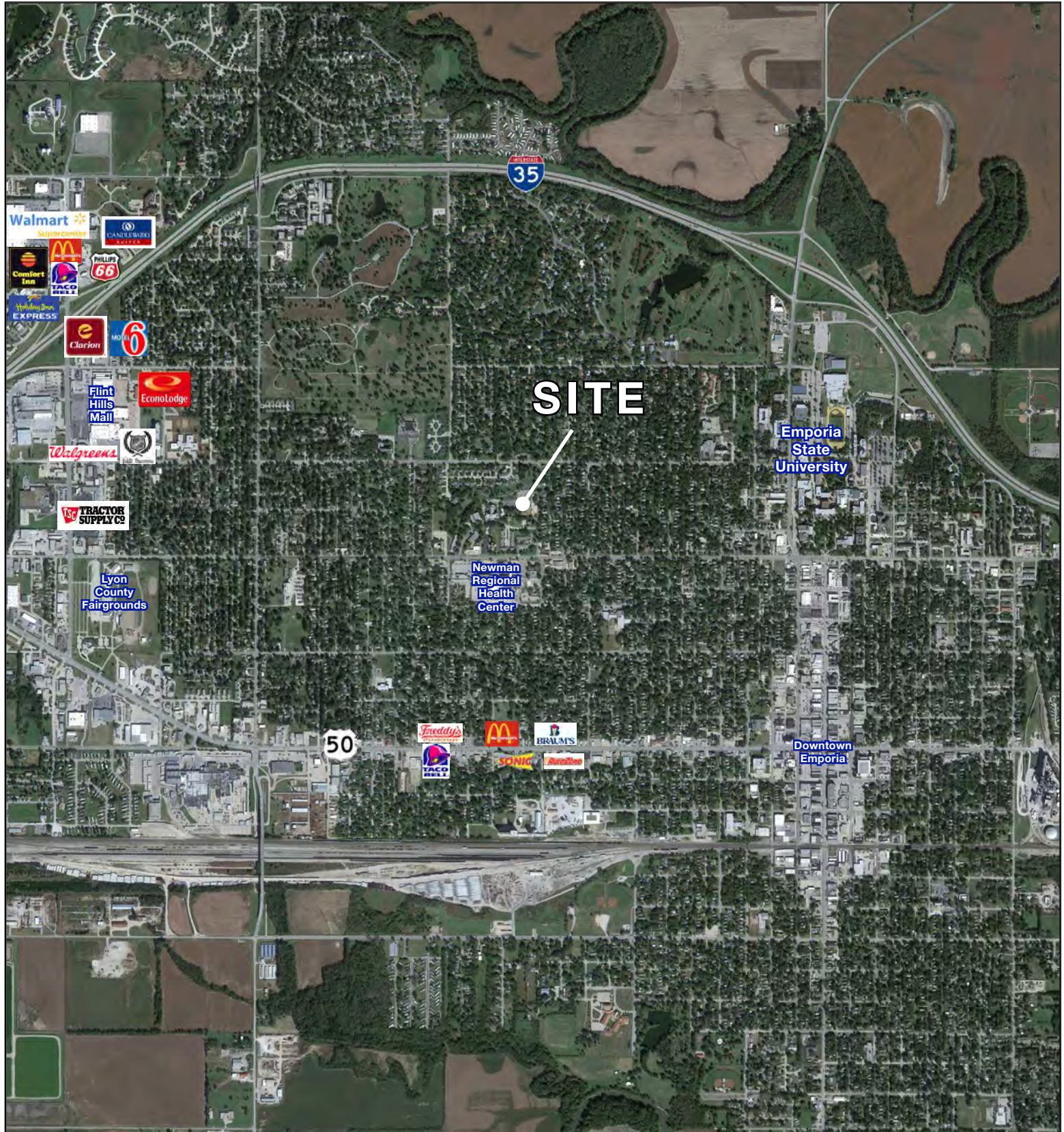
For More Information Contact:

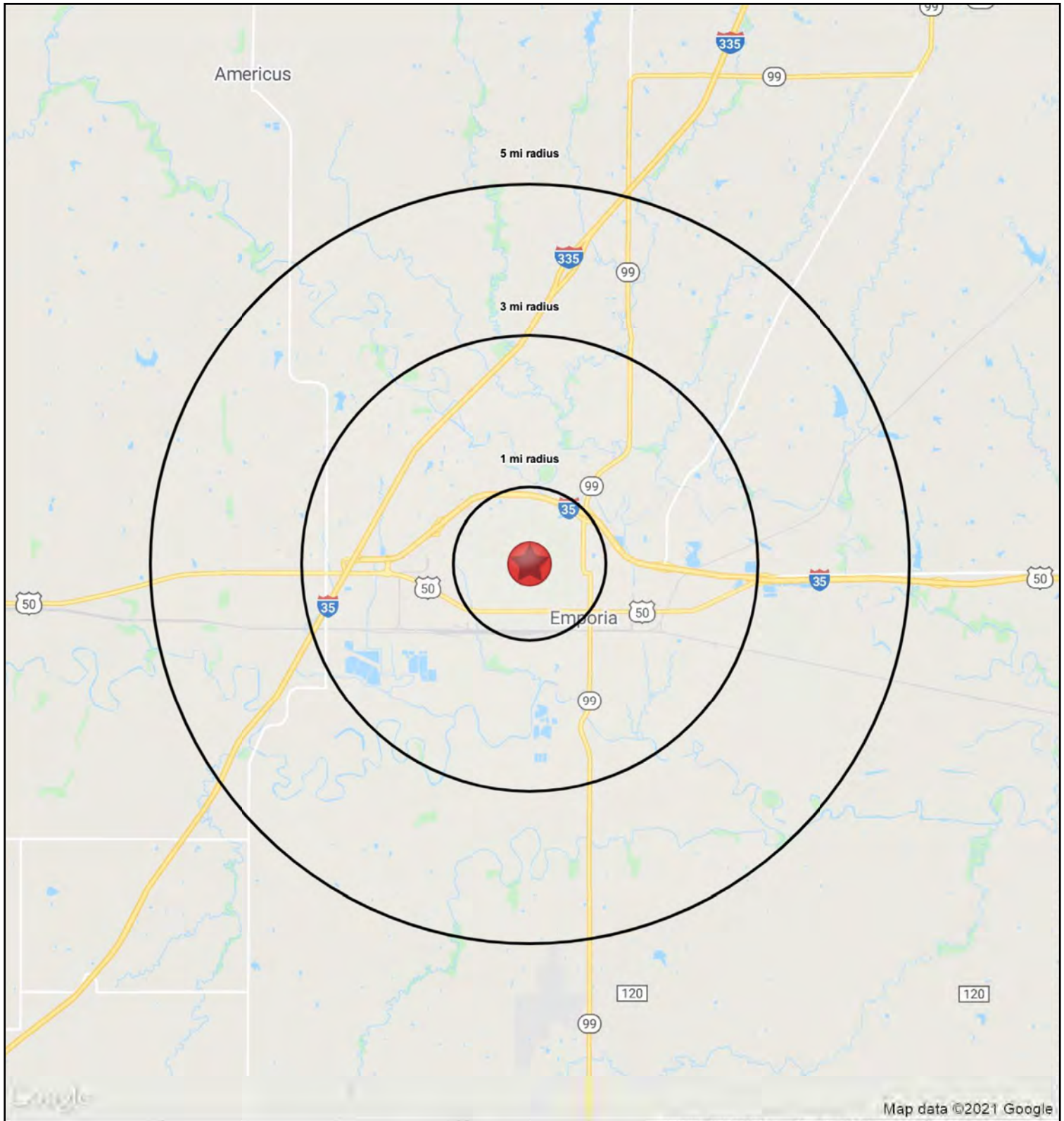
BILL MAAS, CCIM | 816.412.7392 | bmaas@blockandco.com

PHOTOS



AERIAL







OFFICE / MULTI-FAMILY / SENIOR LIVING

1301 Chestnut Street, Emporia, Kansas

1301 Chestnut St Emporia, KS 66801	1 mi radius	3 mi radius	5 mi radius
Population			
2024 Estimated Population	10,438	24,183	25,452
2029 Projected Population	10,367	23,992	25,296
2020 Census Population	10,403	24,374	25,551
2010 Census Population	11,133	25,197	26,495
Projected Annual Growth 2024 to 2029	-0.1%	-0.2%	-0.1%
Historical Annual Growth 2010 to 2024	-0.4%	-0.3%	-0.3%
2024 Median Age	31.1	32.3	32.8
Households			
2024 Estimated Households	4,375	9,835	10,380
2029 Projected Households	4,500	10,081	10,674
2020 Census Households	4,459	9,975	10,452
2010 Census Households	4,405	9,925	10,433
Projected Annual Growth 2024 to 2029	0.6%	0.5%	0.6%
Historical Annual Growth 2010 to 2024	-	-	-
Race and Ethnicity			
2024 Estimated White	76.5%	77.3%	77.3%
2024 Estimated Black or African American	2.5%	2.0%	2.1%
2024 Estimated Asian or Pacific Islander	2.4%	2.2%	2.2%
2024 Estimated American Indian or Native Alaskan	0.6%	0.7%	0.7%
2024 Estimated Other Races	18.0%	17.9%	17.8%
2024 Estimated Hispanic	22.3%	21.6%	21.8%
Income			
2024 Estimated Average Household Income	\$73,997	\$76,942	\$78,031
2024 Estimated Median Household Income	\$48,430	\$55,701	\$56,993
2024 Estimated Per Capita Income	\$31,300	\$31,642	\$32,155
Education (Age 25+)			
2024 Estimated Elementary (Grade Level 0 to 8)	3.0%	6.1%	5.9%
2024 Estimated Some High School (Grade Level 9 to 11)	4.9%	5.0%	4.9%
2024 Estimated High School Graduate	32.6%	33.9%	33.6%
2024 Estimated Some College	19.7%	20.2%	20.5%
2024 Estimated Associates Degree Only	7.1%	7.3%	7.2%
2024 Estimated Bachelors Degree Only	17.2%	15.6%	15.8%
2024 Estimated Graduate Degree	15.5%	11.8%	12.1%
Business			
2024 Estimated Total Businesses	335	924	936
2024 Estimated Total Employees	4,361	11,923	12,027
2024 Estimated Employee Population per Business	13.0	12.9	12.8
2024 Estimated Residential Population per Business	31.1	26.2	27.2

©2024, Sites USA, Chandler, Arizona, 480-491-1112 Demographic Source: Applied Geographic Solutions 5/2024, TIGER Geography - RS1